



# CLIMATE Colors

MU 8187

**gancedo**

1945



Ante Hamersmit

**La belleza que reside en la honestidad y la satisfacción que produce el cuidado de nuestro planeta, han sido los elementos definitivos para la creación de la colección CLIMATE de Gancedo.**

Lo que aparentemente contamina nuestra atmósfera y nos causa rechazo, es hoy la materia prima de la que nace nuestra colección más ecológica: botellas de PET. Una segunda vida para los residuos de un material altamente contaminante. Crear, innovar y reciclar no son incompatibles. Cada vez somos más conscientes de la importancia que tiene reducir el impacto medioambiental de nuestras creaciones, mediante el empleo de una producción eficiente.

Los tejidos CLIMATE tienen en común la suavidad al tacto, son agradables, sofisticados y elegantes, ofrecen una línea de colores audaz y brillante.

CLIMATE es, en apariencia, un tejido de altas prestaciones tan lujosos como el resto de nuestras colecciones, pero con la peculiaridad de dar solución al gran problema del plástico. El reciclaje no sólo omite gran parte del impacto medioambiental, sino que, además, permite convertir eficientemente esta materia prima en un tejido tapicero. El innovador proceso de producción de estos textiles proporciona las mismas propiedades que un tejido convencional. Es fuerte, resistente y, sobre todo, muy suave.

*The beauty inherent in honesty and the satisfaction which caring for our planet produces constituted the definitive elements in the creation of the Gancedo CLIMATE collection.*

*That which apparently pollutes our atmosphere, and we recoil from, is today the raw material from which our most ecological collection has emerged: PET bottles. A new life for the waste from a highly polluting material. Creating, innovating and recycling are not incompatible. We have become ever more aware of the importance of reducing the environmental impact of our creations, through the use of efficient means of production.*

*CLIMATE fabrics all feature softness to the touch, and are pleasant, sophisticated and elegant, offering a bold, brilliant colour palette.*

*CLIMATE is, to all appearances, a high-end fabric every bit as luxurious as the rest of our collections, but with the quirk of providing a solution to the plastic problem. Recycling not only avoids environmental impact to a large extent, but also allows this raw material to be converted efficiently into an upholstery fabric. The innovative process used in the production of these textiles provides the same properties as a conventional fabric. It is strong, hard-wearing and, above all, very soft.*



**Climate Colors incorpora una extensa variedad de colores.** Son 10 tejidos diferentes que incluyen terciopelos:

**IMPRINT** y **BREEZE** – terciopelos de aspecto ligero, brillante y elegante. Elaborados a partir de botellas 100% PET. Ambas son telas lujosas, resistentes y fácilmente combinables.

También incorpora lanas: **LANA** y **WORN** – tejidas con hilos hechos de textiles de lana reciclados posconsumo y poliamida reciclada que se cardan a partir de productos de lana regenerada.

Por último, incluye una selección de texturas: **TRACE**, **POSSIBLE**, **CONTINUAL**, **AMBIENTAL** Y **ENDLESS** – se han desarrollado pensando en la comodidad y con vocación de permanencia; algunos con aspecto más rústico y otros con acabado bouclé, todos tienen en común su componente sostenible, pero también su elegancia, su resistencia y su morbidez.

La chenilla **NEAR** completa esta amplia nueva colección de tejidos eco-eficientes. Una lujosa tapicería tejida 100% PET con hilos de microchenilla.

Todos los tejidos Climate Colors están disponibles en una extensa línea de colores de última tendencia.

El compromiso de Gancedo con la sostenibilidad va más allá de una simple declaración de intenciones. Una filosofía empresarial que se traslada a lo largo de cada una de las áreas de la compañía. Presente no sólo en los valores artesanales, ligados a nuestra fábrica en Valencia, sino también vinculados a la incorporación de los procesos innovadores que minimicen el impacto ambiental de nuestros productos. **Por eso hemos creado la línea CLIMATE para dar respuesta a una de las necesidades más demandadas por nuestros clientes: la creación de tejidos sostenibles, pero manteniendo la calidad y garantía de los textiles convencionales de Gancedo.**

*Climate colors features a wide variety of colours. 10 different fabrics including velvets:*

*IMPRINT and BREEZE. – light looking velvets with an elegant sheen. Manufactured using 100% PET bottles. Both are luxurious hard-wearing fabrics, easy to mix and match.*

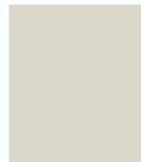
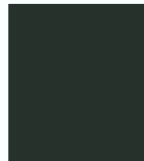
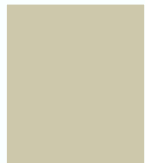
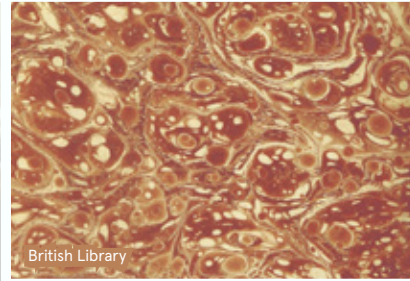
*It also includes Wools: LANA and WORN – woven with yarn made from recycled post-consumer woollen textiles and recycled polyamide carded from repurposed wool products.*

*Finally, it includes a selection of textures: TRACE, POSSIBLE, CONTINUAL, AMBIENTAL and ENDLESS – These have been developed with comfort in mind and intended to last; some with a more rustic aspect and other with a bouclé finish, all have in common not only their sustainable component, but also their elegance, toughness and softness.*

*NEAR chenille completes this ample new collection of eco-efficient fabrics. A luxurious 100% PET upholstery fabric woven using micro chenille yarns.*

*All the Climate Colors fabrics are available in a wide range of on-trend colours.*

*Gancedo's commitment to sustainability goes beyond a simple declaration of intent. A business philosophy that has been transmitted throughout every one of the company's areas. Present not only in craftsmanship values, linked to our factory in Valencia, but also connected to the incorporation of innovative processes which minimise the environmental impact of our products. This is why we have created the CLIMATE line to meet one of the needs most demanded by our clients: the creation of sustainable fabrics while maintaining the quality and guarantee of conventional Gancedo textiles.*

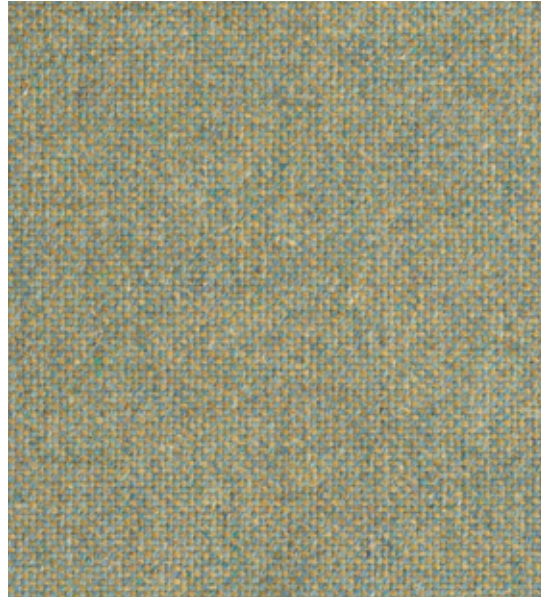




**near - almond**  
TP1496-030-138



**ambiental - almond**  
TP1495-003-138



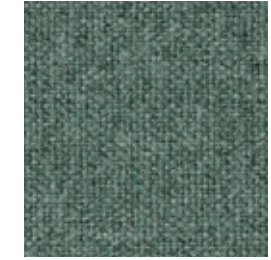
**worn - sage**  
TP1500-020-148



**ambiental - sage**  
TP1495-020-138



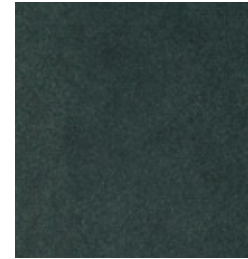
**lana - menta**  
TP1136-023-138



**trace - patina**  
TP1494-061-138



**endless - almond**  
TP1497-003-138



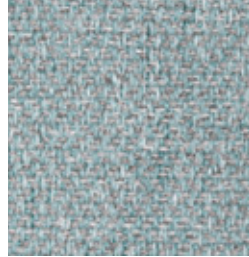
**imprint - patina**  
TJ0987-060-138



**lana - lago**  
TP1136-061-138



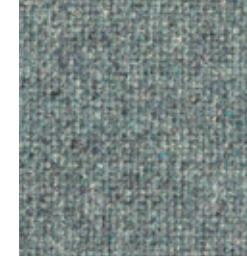
**near - sage**  
TP1496-020-138



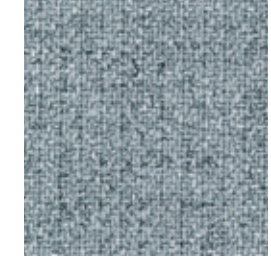
**endless - aqua**  
TP1497-060-138



**continual - pine**  
TP1499-021-143



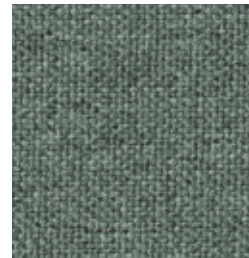
**worn - sky**  
TP1500-060-148



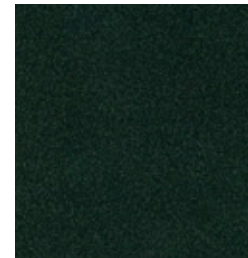
**continual - sky**  
TP1499-060-143



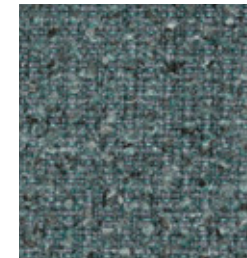
**worn - aqua**  
TP1500-061-148



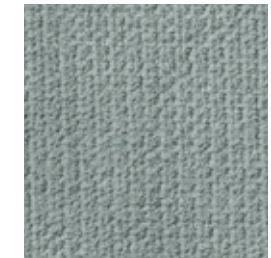
**trace - sky**  
TP1494-060-138



**imprint - pine**  
TJ0987-020-138

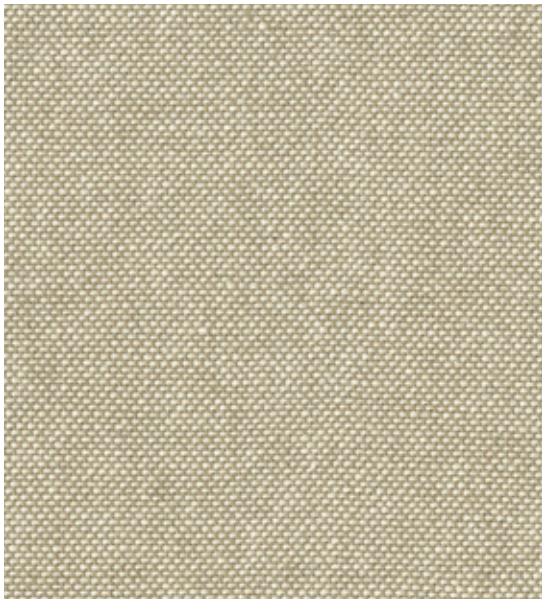


**ambiental - sky**  
TP1495-060-138



**near - aqua**  
TP1496-060-138





**possible - almond**  
TP1498-003-145



**continual - almond**  
TP1499-003-143



**ambiental - smoke**  
TP1495-032-138



**trace - walnut**  
TP1494-071-138



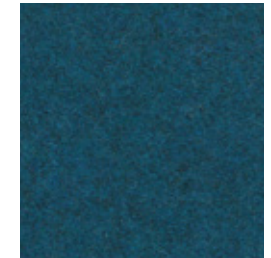
**imprint - smoke**  
TJ0987-030-138



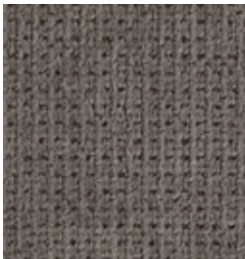
**endless - chestnut**  
TP1497-070-138



**worn - blue**  
TP1500-006-148



**lana - azul**  
TP1136-066-138



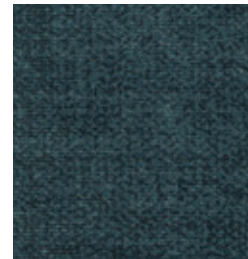
**near - cacao**  
TP1496-007-138



**ambiental - blue**  
TP1495-006-138



**breeze - navy**  
TJ0988-006-138



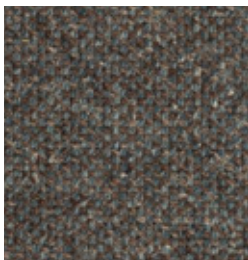
**breeze - ocean**  
TJ0988-060-138



**trace - blue**  
TP1494-006-138



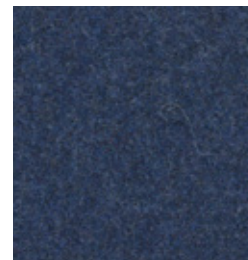
**continual - blue**  
TP1499-006-143



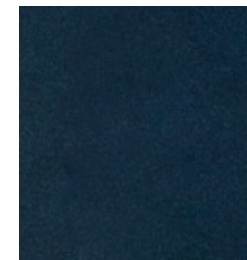
**worn - ebony**  
TP1500-074-148



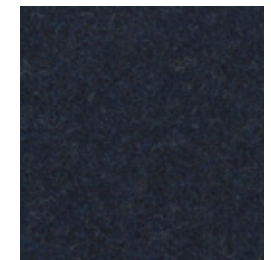
**near - blue**  
TP1496-006-138



**lana - noche**  
TP1136-062-138



**imprint - navy**  
TJ0987-006-138



**lana - marino**  
TP1136-064-138



worn - nacre  
TP1500-009-148



worn - papyrus  
TP1500-030-148



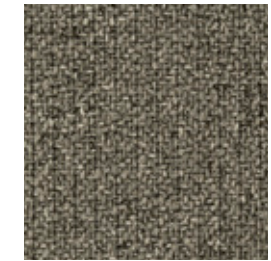
lana - lino  
TP1136-032-138



possible - apple  
TP1498-002-145



endless - apple  
TP1497-002-138



continual - pond  
TP1499-020-143



trace - pond  
TP1494-021-138



lana - piedra  
TP1136-031-138



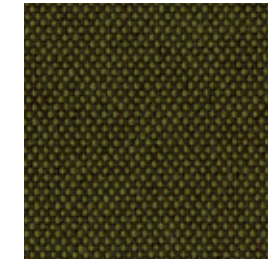
continual - papyrus  
TP1499-030-143



trace - toad  
TP1494-020-138



lana - musgo  
TP1136-022-138



possible - lizard  
TP1498-020-145



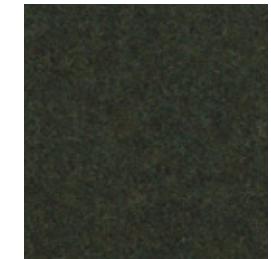
ambiental - green  
TP1495-002-138



near - lizard  
TP1496-002-138



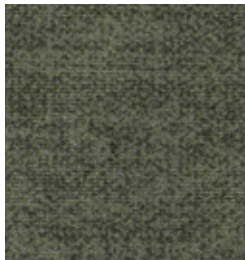
worn - green  
TP1500-002-148



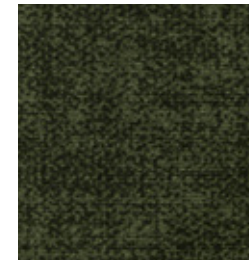
lana - miliat  
TP1136-002-138



trace - green  
TP1494-002-138



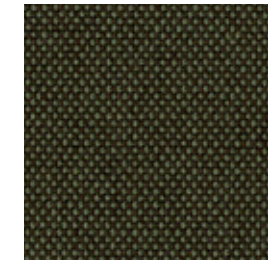
breeze - pond  
TJ0988-020-138



breeze - pine  
TJ0988-002-138



continual - green  
TP1499-002-143



possible - pond  
TP1498-021-145





**near - bone**  
TP1496-003-138



**lana - arena**  
TP1136-003-138



**trace - bone**  
TP1494-003-138



**worn - toffee**  
TP1500-040-148



**breeze - yolk**  
TJ0988-005-138



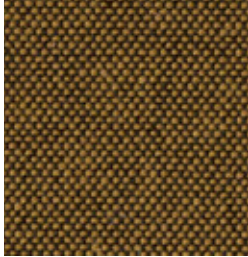
**possible - toffee**  
TP1498-005-145



**possible - cookie**  
TP1498-033-145



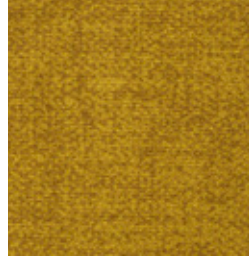
**trace - yolk**  
TP1494-005-138



**possible - yolk**  
TP1498-050-145



**continual - yolk**  
TP1499-005-143



**breeze - yellow**  
TJ0988-050-138



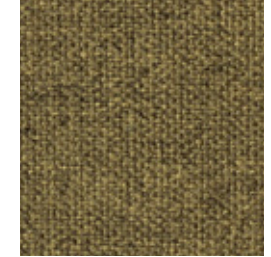
**near - yolk**  
TP1496-050-138



**imprint - yellow**  
TJ0987-005-138



**endless - yellow**  
TP1497-005-138



**trace - lizard**  
TP1494-022-138



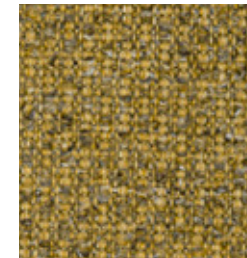
**worn - yellow**  
TP1500-005-148



**near - yellow**  
TP1496-005-138



**lana - verde**  
TP1136-021-138



**ambiental - yellow**  
TP1495-005-138



**imprint - lizard**  
TJ0987-002-138



worn - linen  
TP1500-090-148



endless - latte  
TP1497-030-138



near - gravel  
TP1496-070-138



trace - chocolate  
TP1494-070-138



near - walnut  
TP1496-071-138



breeze - brown  
TJ0988-007-138



ambiental - gravel  
TP1495-070-138



near - brown  
TP1496-072-138



lana - marron  
TP1136-007-138



continual - brown  
TP1499-007-143



breeze - chocolate  
TJ0988-070-138



worn - walnut  
TP1500-072-148



lana - topo  
TP1136-070-138



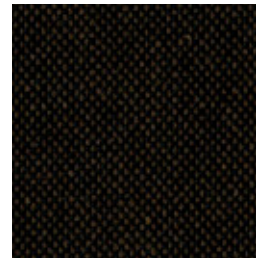
possible - brown  
TP1498-007-145



imprint - brown  
TJ0987-007-138



lana - café  
TP1136-072-138



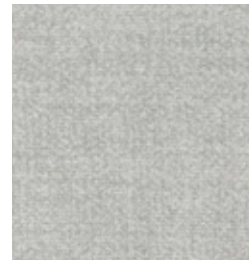
possible - chocolate  
TP1498-070-145



**possible - smoke**  
TP1498-030-145



**lana - sandshell**  
TP1136-093-138



**breeze - mist**  
TJ0988-003-138



**near - sand**  
TP1496-031-138



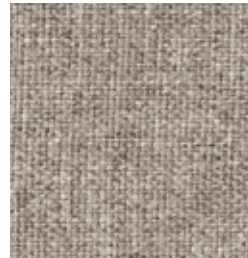
**endless - mist**  
TP1497-071-138



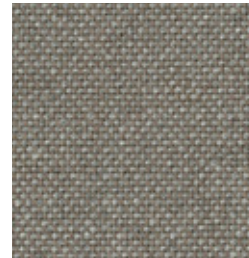
**ambiental - sand**  
TP1495-031-138



**trace - smoke**  
TP1494-090-138



**trace - mist**  
TP1494-030-138



**possible - walnut**  
TP1498-032-145



**imprint - umber**  
TJ0987-070-138



**endless - walnut**  
TP1497-007-138



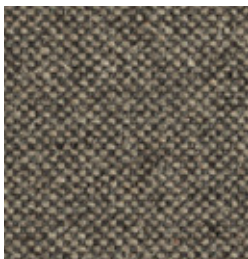
**breeze - walnut**  
TJ0988-030-138



**continual - mist**  
TP1499-071-143



**worn - brown**  
TP1500-073-148



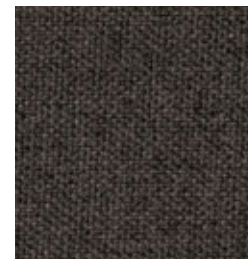
**worn - umber**  
TP1500-091-148



**ambiental - umber**  
TP1495-007-138



**continual - gravel**  
TP1499-070-143



**trace - truffle**  
TP1494-091-138



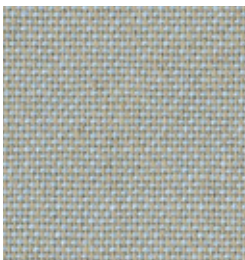
**imprint - truffle**  
TJ0987-009-138



**possible - gravel**  
TP1498-071-145



**breeze - nacre**  
TJ0988-009-138



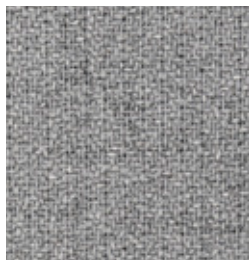
**possible - silver**  
TP1498-009-145



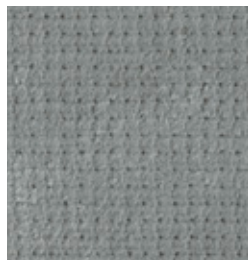
**breeze - silver**  
TJ0988-090-138



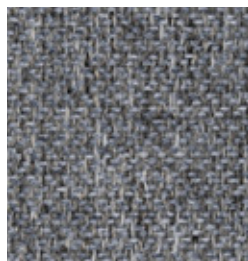
**ambiental - fog**  
TP1495-009-138



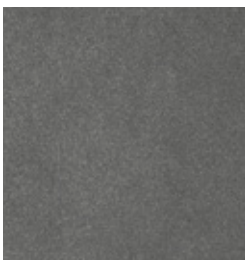
**continual - silver**  
TP1499-009-143



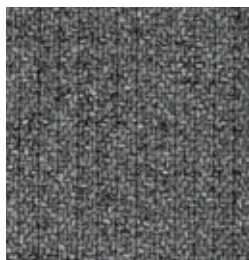
**near - fog**  
TP1496-009-138



**endless - dew**  
TP1497-006-138



**imprint - gravel**  
TJ0987-090-138



**continual - fog**  
TP1499-090-143





**endless - fog**  
TP1497-009-138



**breeze - fog**  
TJ0988-091-138



**lana - plata**  
TP1136-009-138



**endless - metal**  
TP1497-090-138



**ambiental - iron**  
TP1495-090-138



**breeze - metal**  
TJ0988-092-138



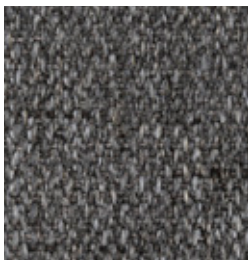
**ambiental - mud**  
TP1495-092-138



**near - mud**  
TP1496-090-138



**worn - gravel**  
TP1500-075-148



**endless - gravel**  
TP1497-091-138



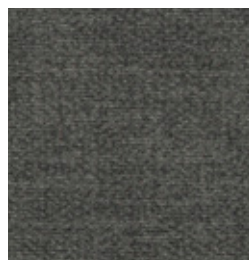
**near - carbon**  
TP1496-999-138



**lana - inox**  
TP1136-091-138



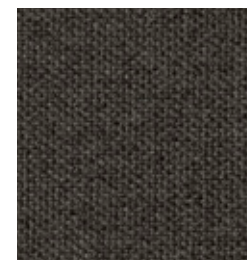
**trace - gravel**  
TP1494-009-138



**breeze - iron**  
TJ0988-093-138



**ambiental - metal**  
TP1495-091-138



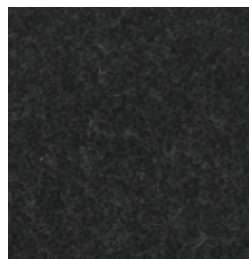
**trace - carbon**  
TP1494-999-138



**worn - carbon**  
TP1500-999-148



**continual - iron**  
TP1499-091-143



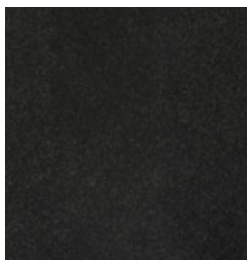
**lana - carbon**  
TP1136-092-138



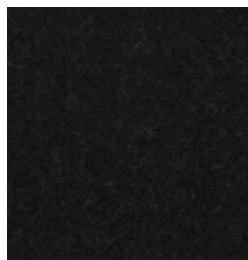
**possible - carbon**  
TP1498-999-145



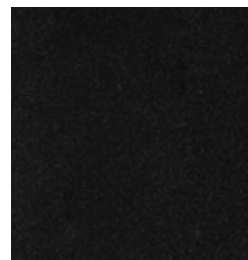
**continual - carbon**  
TP1499-092-143



**imprint - carbon**  
TJ0987-091-138



**lana - black**  
TP1136-999-138



**imprint - black**  
TJ0987-999-138



**breeze - carbon**  
TJ0988-999-138



worn - sand  
TP1500-003-148



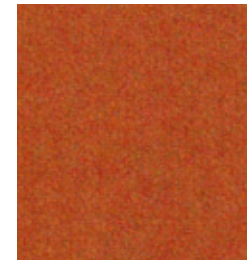
lana - crema  
TP1136-030-138



ambiental - latte  
TP1495-030-138



worn - grapefruit  
TP1500-004-148



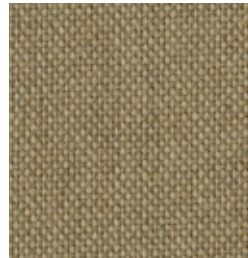
lana - naranja  
TP1136-041-138



lana - mandarina  
TP1136-042-138



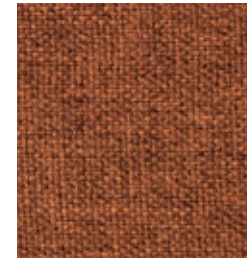
imprint - almond  
TJ0987-003-138



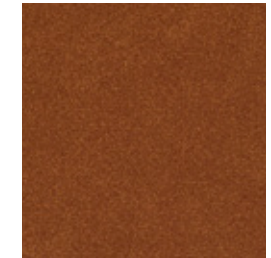
possible - coffee  
TP1498-031-145



continual - caramel  
TP1499-040-143



trace - pumpkin  
TP1494-040-138



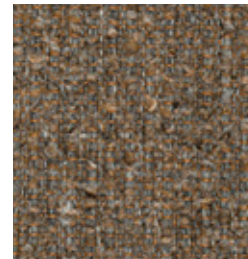
imprint - pumpkin  
TJ0987-004-138



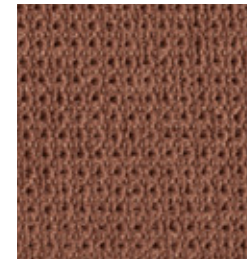
breeze - sand  
TJ0988-031-138



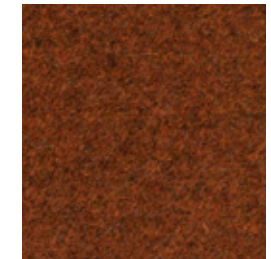
worn - coffee  
TP1500-071-148



ambiental - brown  
TP1495-004-138



near - chestnut  
TP1496-004-138



lana - tierra  
TP1136-073-138



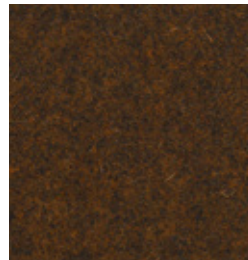
worn - brown  
TP1500-070-148



trace - brown  
TP1494-007-138



worn - chocolate  
TP1500-007-148



lana - terracota  
TP1136-071-138



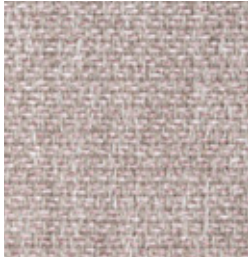
possible - pimppkin  
TP1498-004-145



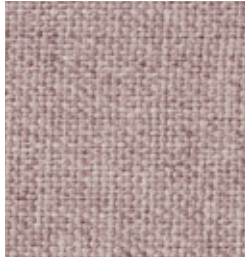
worn - pink  
TP1500-010-148



breeze - ginger  
TJ0988-004-138



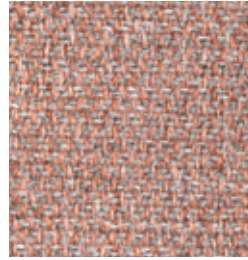
**endless - olyster**  
TP1497-040-138



**trace - lavender**  
TP1494-008-138



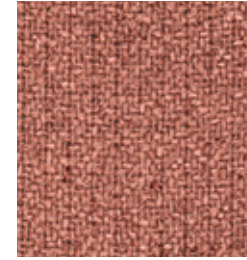
**breeze - pink**  
TJ0988-040-138



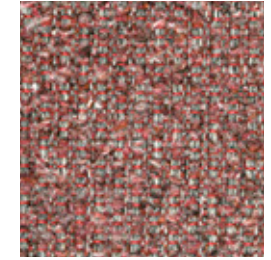
**endless - peach**  
TP1497-041-138



**imprint - pink**  
TJ0987-040-138



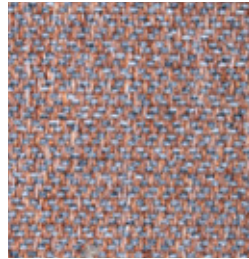
**continual - peach**  
TP1499-004-143



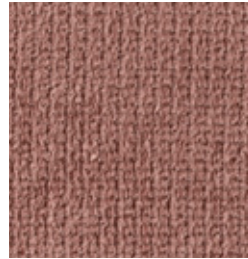
**ambiental - red**  
TP1495-001-138



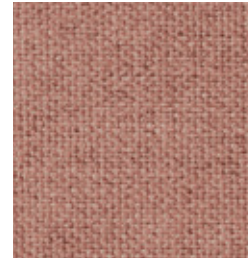
**lana - rosewood**  
TP1136-044-138



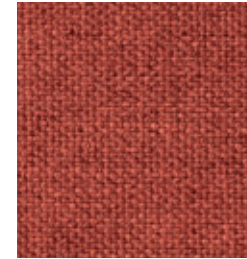
**endless - pink**  
TP1497-004-138



**near - pink**  
TP1496-040-138



**trace - pink**  
TP1494-004-138



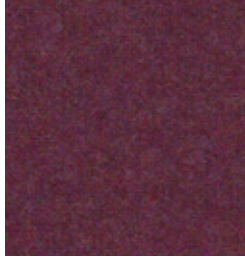
**trace - red**  
TP1494-001-138



**lana - ferrari**  
TP1136-010-138



**lana - rosa**  
TP1136-004-138



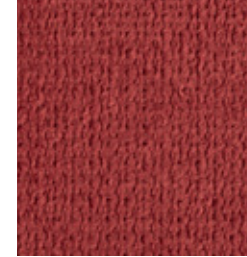
**lana - mora**  
TP1136-081-138



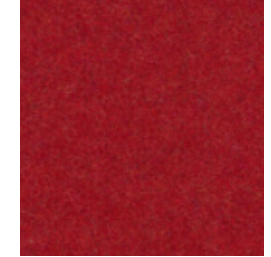
**imprint - rosewood**  
TJ0987-010-138



**worn - peach**  
TP1500-001-148



**near - red**  
TP1496-001-138



**lana - rojo**  
TP1136-001-138



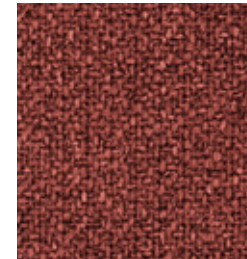
**lana - arandano**  
TP1136-080-138



**possible - rosewood**  
TP1498-001-145



**breeze - rosewood**  
TJ0988-001-138



**continual - red**  
TP1499-001-143



**imprint - red**  
TJ0987-001-138





# CLIMATE colors

MU 8187

## FICHA TÉCNICA TECHNICAL SHEET

NOMBRE NAME	REFERENCIA CODE	ANCHO WIDTH cm / in	PESO WEIGHT kg/ml	COMPOSICIÓN COMPOSITION	ABRASIÓN MARTINDALE	PILLING PILLING	MANTENIMIENTO MAINTENANCE	USO USE	CERTIFICACIÓN CERTIFICATION*
imprint	TJ0987	138 54.33	0,885	100% RECYCLED PET	100 000	4-5			OEKO-TEX® CONFIDENCE IN TEXTILES STANDARD 100
breeze	TJ0988	138 54.33	0,703	100% RECYCLED PET 22% PES	95 000	4-5			OEKO-TEX® CONFIDENCE IN TEXTILES STANDARD 100
lana	TP1136	145 57.08	0,87	70% RECYCLED WO 25% PA 5% RECYCLED OF	100 000	3-4			-
trace	TP1494	138 54.33	0,68	60% RECYCLED PET 40% PES	100 000	4			OEKO-TEX® CONFIDENCE IN TEXTILES STANDARD 100
ambiental	TP1495	138 54.33	0,811	100% RECYCLED PET	45 000	4			OEKO-TEX® CONFIDENCE IN TEXTILES STANDARD 100
near	TP1496	138 54.33	0,685	100% RECYCLED PET	100 000	4-5			OEKO-TEX® CONFIDENCE IN TEXTILES STANDARD 100
endless	TP1497	138 54.33	0,598	100% RECYCLED PP	50 000	4-5			OEKO-TEX® CONFIDENCE IN TEXTILES STANDARD 100
possible	TP1498	145 57.08	0,73	65% RECYCLED CO 30% PES 5% RECYCLED OF	25 000	3-4			OEKO-TEX® CONFIDENCE IN TEXTILES STANDARD 100
continual	TP1499	143 56.29	0,643	100% RECYCLED PET	55 000	4-5			OEKO-TEX® CONFIDENCE IN TEXTILES STANDARD 100
worn	TP1500	148 58.26	0,814	50% RECYCLED WO 30% LI 20% PA	100 000	3-4			-

\* CERTIFICACIÓN  
CERTIFICATION



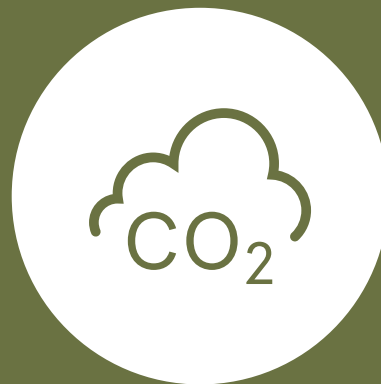
**SOSTENIBILIDAD**  
**SUSTAINABILITY**



**Menos energía**  
*Less energy*



**Menos agua**  
*Less water*



**Menos CO<sub>2</sub>**  
*Less CO<sub>2</sub>*



**Materiales sostenibles**  
*Sustainable materials*



S

1945